

The sustainable elevator that fits into every building

eFlex

Spain



ThyssenKrupp Elevator
Manufacturing Spain



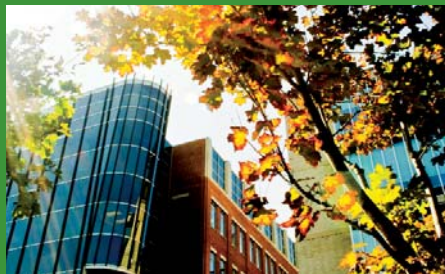
ThyssenKrupp

e-Flex = Elevator + Sustainable + Compact + Modular

e-Flex is ThyssenKrupp new concept of a machine room passenger elevator. It is specially designed to give the maximum flexibility either in existing shaft or in new installations.

e-Flex is a highly efficient and environmentally friendly elevator due to its new features such as the Gearless machine, VF inverter and the CMC4 Bus-Can controller.

e-Flex reflects our sustainable efficiency compromise: maximum efficiency with a reduced energy consumption due to the Gearless machine, VF inverter, LED lights and car-light automatic switch off in stand-by operation. Accessibility for everybody.



Future in modernization

Out with the old, in with the new



Due to its new compact and flexible design, it is the perfect solution for replacement of existing lifts. **e-Flex**: a new elevation concept that will make people enjoy coming back home.



- New compact and elegant design.
- Modular system.
- No unused space.
- Reduced pit and overhead.
- Economical solution for replacement of existing lifts.
- Smooth travel.
- High performance.
- Low energy consumption.
- Sustainable efficiency.

Multiple decoration choices



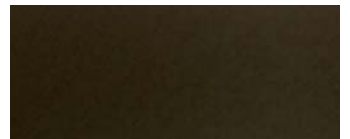
Around the light
 We present a unique new transportation and meeting space. A bright and great space with a fresh and elegant design". Vicente Porres, S1 cabin designer.



S1 black



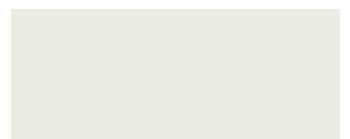
S1 fire



S1 earth



S1 water



S1 air



S1 stainless steel



Handrail

Developing **e-Flex** we took advantage of the combined experience and technological know-how of our worldwide business and highly qualified employees. The result is a reliable, high quality elevator where safety, comfort and design are the most important characteristics.



LIP 7 COP (standard)



Polymeric Floor



LOP LIP 7 (standard)

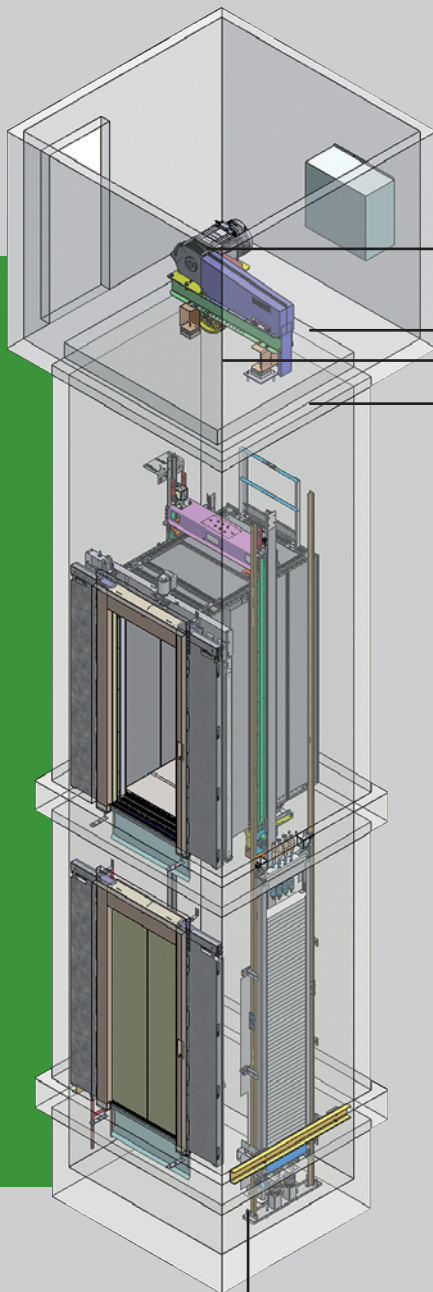


Programmable TKE LCD COP (optional)



LOP with arrows

Technical features

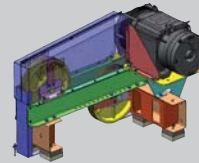


“Ecospin” Machine



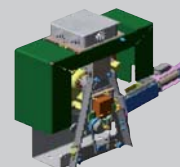
- Old geared machines can be replaced by a gearless machine.
- Maintenance free (no oil is required).
- Low noise level (<55dB measured at 1m distance).
- High energy efficiency.
- Smooth ride comfort.

Low profile bed plate



- Compact design and flexible shaft dimensions.
- It is the core of e-flex performance together with the Ecospin machine.
- High isolation resistance.
- It fits in reduced machine rooms.
- Maximum performance.

Speed governor



- Designed according to EN 81.1.
- ThyssenKrupp quality guarantee.
- Used for every kind of ThyssenKrupp elevator.

Inverter

- Located in the machine room.
- Low energy consumption.
- Smooth travel.

Reduced pit

Controller

- Bus can technology.
- Plug and play (reduced assembly time).
- High quality controller.
- Wide range of functions.
- Low energy consumption.
- High reliability.

Specs data sheets



ThyssenKrupp Elevator
Manufacturing Spain

C/ Cifuentes, s/n. 28021 Madrid. Spain
Phone: +34 913 796 300. Fax: +34 917 109 409
E-mail: marketing.tkems@thyssenkrupp.com
www.thyssenkrupp-elevator-manufacturing-spain.com



sustainable  efficiency

Printed in Spain 11/2010
The details quoted in this brochure can only be binding when confirmed expressly in written proposal. Reproduction, reprint and digital storage only with authorization of the editor.

Technical information

ECOSPIN is a highly efficient and environmental friendly machine. **e-Flex**: great performances with low energy consumption.

Machine information

| Model (400VAC) | Nominal Load (kg) | Nominal Speed (m/s) | Power (kW) | In(A) |
|----------------|-------------------|---------------------|------------|-------|
| ECOSPIN 32V11 | 320 | 1 | 2,4 | 6,35 |
| ECOSPIN 45V11 | 450 | 1 | 3,1 | 12 |
| ECOSPIN 63V11 | 630 | 1 | 4,3 | 16 |

Elevator information

| | |
|----------------|--------------------|
| Capacity | From 320 to 630Kg |
| Speed | 1m/s |
| Maximum travel | 45m |
| Maximum stops | 16 |
| Operation | Up to 4 car groups |
| Suspension | 1:1 |

Due to a wide range of loads, dimensions and type of doors **e-Flex** can be installed in every building, either existing or new installation.

| CAPACITY | | CAR | | | | DOORS | | SHAFT | | | |
|-----------------|-------------|-----------|------------------|------------------|----------------------|-----------------|--------------|-------|-------|------------------|-------------|
| Load (Kg) | People | Entrances | Width* | Depth | Height | Width** | Height | Width | Depth | Minimum Overhead | Minimum Pit |
| From 320 to 630 | From 3 to 8 | One | From 770 to 800 | From 670 to 1690 | 2070 | From 600 to 900 | 2000 2100 | *** | *** | 3250 | 1000 |
| | | | From 800 to 1280 | | 2150 2220 2320 | | | | | | 900 |

Dimensions in mm. * Car width increases by 10mm. ** Doors width increases by 50 mm. ***Depending on the layout.

Technical features

Standard and optional features

MOTOR / DRIVE / POWER SUPPLY

| | | | |
|--------------------------------------|---|--------------------------|---|
| Gearless machine | ● | Frequency converter VVVF | ● |
| Power supply 3X400 V-50 Hz | ● | Lighting voltage 220V | ● |
| Connection to emergency power supply | ○ | Power supply 3X415V-50 H | ○ |
| Power supply 3X220V-60Hz | ○ | | |

CONTROLLER

| | | | |
|--------------------------------|---|--|---|
| CMC4 down selective | ● | Control cabinet in painted steel sheet | ● |
| Up & down collective-selective | ○ | Group Controller | ○ |
| Advanced door opening | ○ | Fire evacuation system | ○ |
| Fireman service | ○ | Groups with different number of stops | ○ |
| Automatic rescue device | ○ | | |

CAR EQUIPMENT

| | | | |
|---------------|---|----------------------------|---|
| S1 decoration | ● | Melamine walls (5 options) | ● |
| Vertical COP | ● | Polymeric floor (1 option) | ● |
| Handrail (1) | ● | Stainless steel walls | ○ |

OPERATING AND INDICATING ELEMENTS

| | | | |
|--------------------------|---|---------------------------------------|---|
| Alarm push button in COP | ● | Door-open/door close pushbuttons | ● |
| Overweight indicator | ● | LIP 7 indicator with scrolling arrows | ● |
| Key push button | ○ | Two push buttons in LOP | ○ |
| Voice announcement | ○ | Flush mounted LOPBPP2S | ● |

COMMUNICATION

| | | | |
|--|---|----------------|---|
| Bi-directional communication with a control center (EAR) | ● | 2-way intercom | ● |
| Alternative communication system | ○ | 3-way intercom | ○ |

DOORS

| | | | |
|---|---|--|---|
| Stainless steel car doors | ● | Primed landing doors | ● |
| Stainless steel landing doors | ○ | 2 panels lateral opening ECD primed landing door | ○ |
| 2 panels lateral opening ECD stainless steel car door | ○ | 2 panels lateral opening alternative manufacturer door | ○ |
| 2 panels central opening external supplier door | ○ | 3 panels lateral opening alternative manufacturer door | ○ |
| 4 panels central opening external supplier door | ○ | BUS doors | ○ |
| Swing doors | ○ | Single photocell | ● |
| Light curtain | ○ | | |

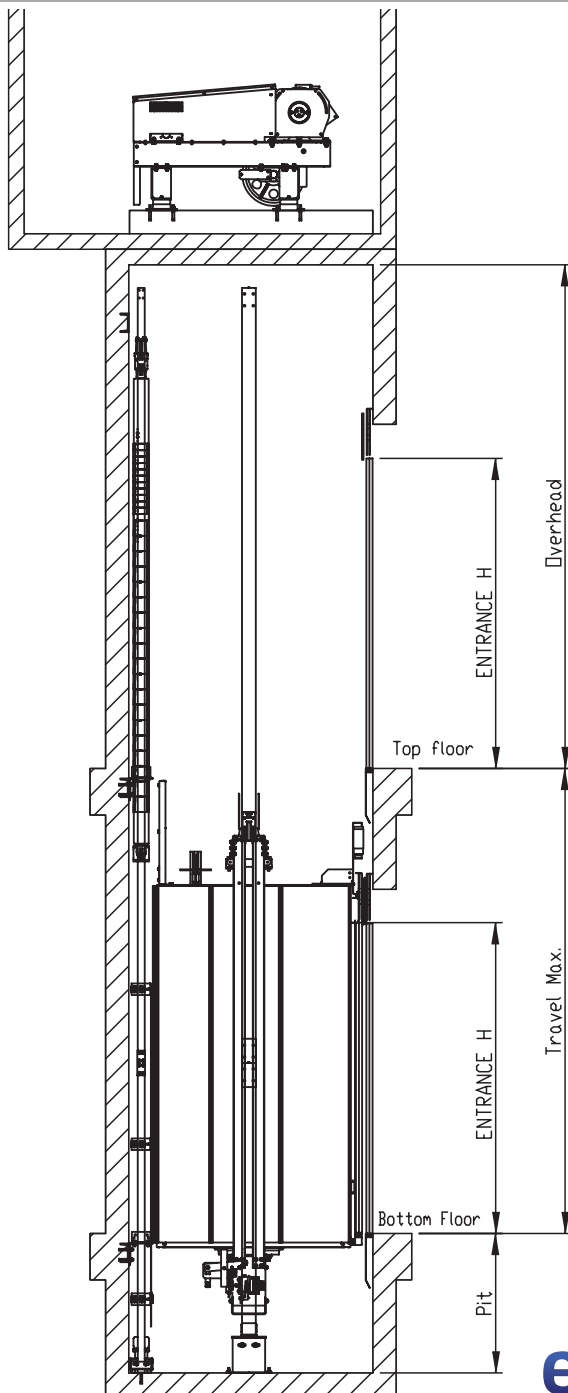
● Included in the Base Price

○ Optional

Technical information

Plan your elevator with e-Flexibility

Three different counterweight layouts, multiple door's options, reduced pit and overhead, will let your **e-Flex** easily adapt to every shaft.



Technical information

Plan your elevator with flexibility. Thanks to its reduced pit and overhead and its different counterweight layouts e-flex is adaptable to every shaft. Choose a layout and check what **e-Flex** is able to do.

